

TA

ENDOSKELETON® TA

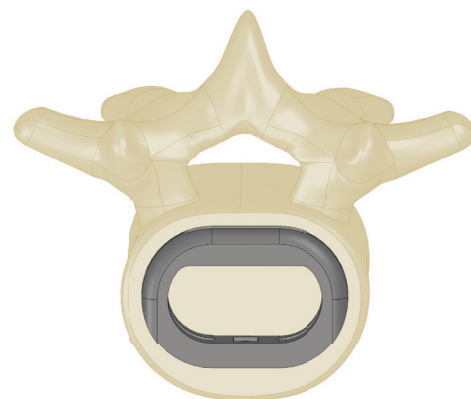
TA

TITAN  
SPINE

STAND WITH THE FUTURE

NOW WITH nanoLOCK® SURFACE TECHNOLOGY

## Anterior Interbody Fusion Device for the Lumbar Spine



## Interbody Implants that Participate in the Fusion Process

### Proprietary nanoLOCK® Titanium Surface

Macro textures on the superior and inferior surfaces promote immediate mechanical fixation.

Micro and Nano textures on the superior, inferior, and internal surfaces have the potential to upregulate the production of osteogenic factors, such as BMP-2 and 4, and angiogenic factors that are critical for bone growth and fusion.<sup>1</sup>

### Endplate Sparing and Apophyseal Fixation

The device is designed to be implanted without damaging the endplate and reside on the apophyseal ring, yielding increased resistance to subsidence.

### Large Windows

Large windows and internal volume provide for significant bone graft packing, desired bone graft loading, clear CT and MRI visualization, and the potential for multi-directional bone growth.

### Easy and Accurate Placement

Minimal surgical steps, intuitive instrumentation, and a smooth leading edge allow for easy insertion while the radiopaque nature of titanium permits placement in the desired location.

### Variety of Sizes

Twenty-four different sizes accommodate various patient anatomies.



<sup>1</sup>Olivares-Navarrete, R., Hyzy S.L., Gittens, R.A., Berg, M.E., Schneider, J.M., Hotchkiss, K., Schwartz, Z., Boyan, B. D. Osteoblast lineage cells can discriminate microscale topographic features on titaniumaluminum-vanadium surfaces. Ann Biomed Eng. 2014 Dec; 42 (12): 2551-61.

ENDOSKELETON® TA

TA

TA

TITAN  
SPINE

STAND WITH THE FUTURE

NOW WITH nanoLOCK® SURFACE TECHNOLOGY

## Anterior Interbody Fusion Device for the Lumbar Spine

### ENDOSKELETON® TA 7° LORDOTIC

Standard: 32mm x 21mm		Large: 36mm x 24mm		X-Large: 40mm x 27mm		
Original Surface	nanoLOCK® Surface	Original Surface	nanoLOCK® Surface	Original Surface	nanoLOCK® Surface	
2107-0110	2107-0110-N	2107-0210	2107-0210-N	2107-0310	2107-0310-N	<b>10mm</b>
2107-0111	2107-0111-N	2107-0211	2107-0211-N	2107-0311	2107-0311-N	<b>11mm</b>
2107-0112	2107-0112-N	2107-0212	2107-0212-N	2107-0312	2107-0312-N	<b>12mm</b>
2107-0113	2107-0113-N	2107-0213	2107-0213-N	2107-0313	2107-0313-N	<b>13mm</b>
2107-0114	2107-0114-N	2107-0214	2107-0214-N	2107-0314	2107-0314-N	<b>14mm</b>
2107-0115	2107-0115-N	2107-0215	2107-0215-N	2107-0315	2107-0315-N	<b>15mm</b>
2107-0116	2107-0116-N	2107-0216	2107-0216-N	2107-0316	2107-0316-N	<b>16mm</b>
2107-0117	2107-0117-N	2107-0217	2107-0217-N	2107-0317	2107-0317-N	<b>17mm</b>

Notice: One or more products are covered by patents.  
Please refer to package insert for current warnings, precautions, and instructions for use.

© 2011, Titan Spine. All rights reserved. ENDOSKELETON, nanoLOCK® are proprietary trademarks of Titan Spine. Printed in USA. Literature Part Number 60-0003, Rev07.



TITAN  
SPINE

STAND WITH THE FUTURE

Titan Spine  
Mequon Research Center  
6140A West Executive Drive  
Mequon, WI 53092  
(866) 822 7800

[www.titanspine.com](http://www.titanspine.com)